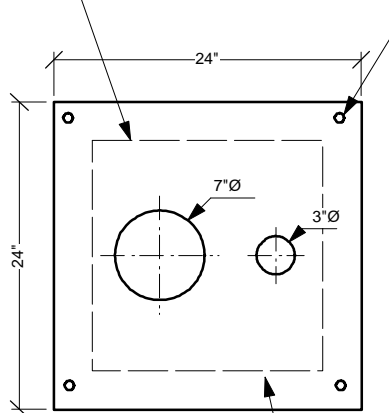


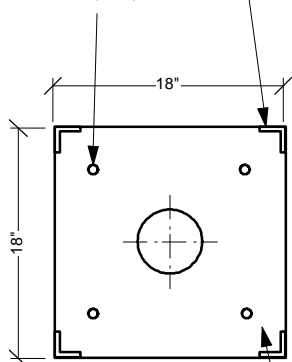
18" X 18" WATER TANK OPENING  
 DRILL FOUR 3/4" HOLES FOR MOUNTING (TYP.)



**SECTION B-B**

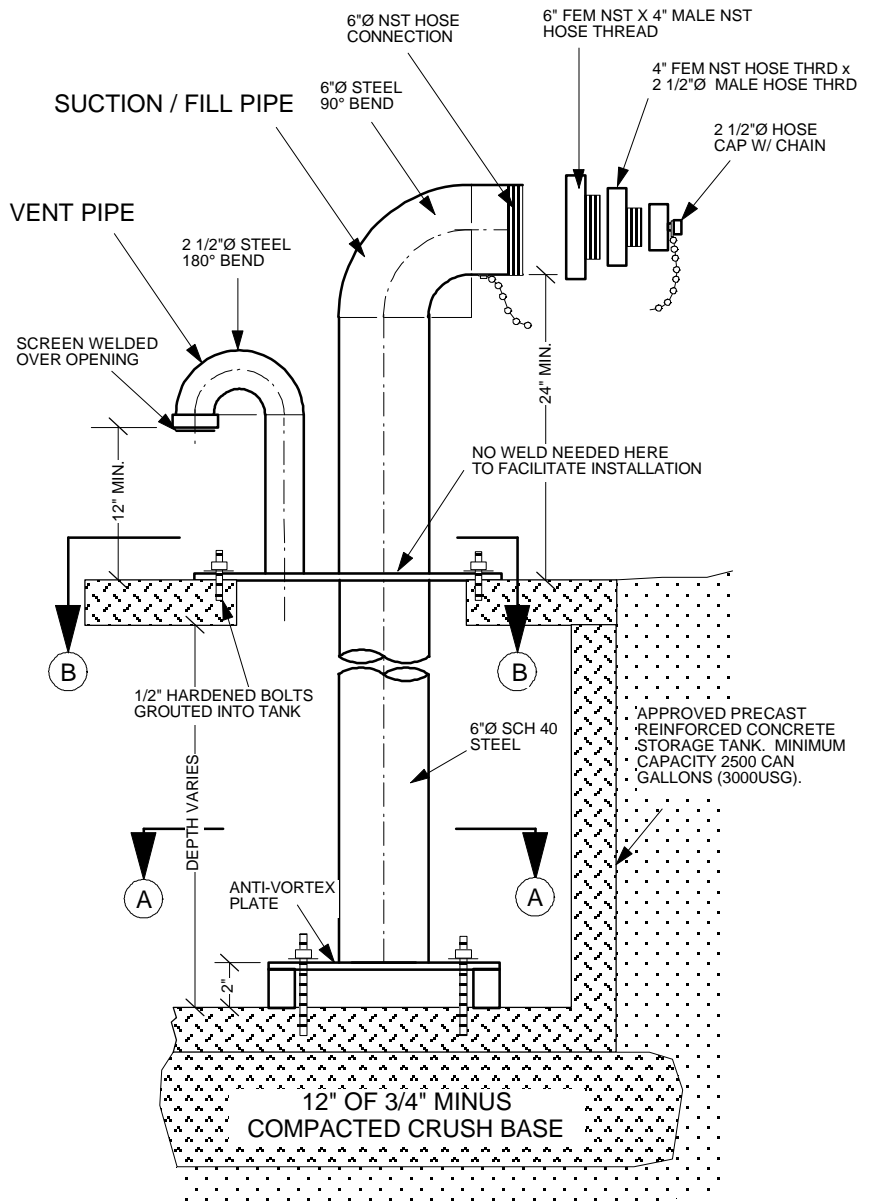
1/4" STEEL PLATE (TYP.)

DRILL FOUR 3/4" HOLES FOR MOUNTING (TYP.)  
 STEEL ANGLE SUPPORTS (TYP.)



**SECTION A-A**

1/4" STEEL PLATE (TYP.)



**ELEVATION**

**NOTES:**

1. ALL METAL PARTS SHALL BE ASSEMBLED BY WELDING, PAINTED WITH CORROSION PROTECTANT COAT AND RED ENAMEL PAINT COAT.
2. RECOMMENDED INSIDE DIMENSIONS 2m. WIDE x 3.5m. LONG x 1.6m. DEEP.

Revised: March 20, 2001 by MK



**HIGHLANDS FIRE DEPT.**

1564 Millstream Road  
 Victoria, B.C. V9E 1G6  
 E. Hall (250) 479-1814 \* W. Hall (250) 474-2633  
 Fax (250) 474-3677

TITLE:

**FD-1A  
 Water Storage Tank Detail  
 SMALL CISTERN ASSEMBLY**

DATE:

16 July 2000

SCALE:

1:50

DRAWN:

M. Kristiansen

APPROVED: